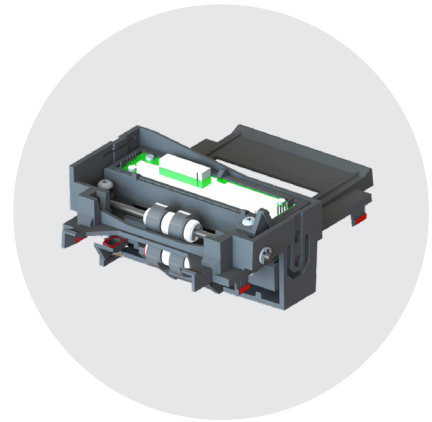


PRINTER OPTION

Scanner module



BETTER EFFICIENCY & QUALITY WITH SCANNER OPTION

Integrating scanner module into Evolis printers' enables users to offer new possibilities for cards printing process and to enhance the quality of their decentralized application.

Embedded into the printer, the scanner reads the card (2 sides at once), captures all data and digitizes quickly. Based on a high speed processing, different options can be applied to get the image result according to user needs: resolution (300 / 600 dpi), color mode (color, greyscale) and formats (PNG, JPG, BMP).

Scanner technology opens doors to many practical applications, including:

- **Traceability:** Scanning printed card for historical and archiving purpose, for traceability and fraud prevention (ex: ensuring that the printer is not misused or used fraudulently), proof of printing (ex in case of litigation), etc.
- **Quality:** Check and apply some controls on the card before and / or after printing in order to reduce the cards in error and the corresponding cost, such as for example:
 - Automatic detection of elements on the card (chip, magnetic strip, ...),
 - Check the direction of insertion of the card before printing to adapt the personalization of the card accordingly,
 - Read pre-printed data on the card to check the validity of a text (by OCR reading), a QR-Code, etc. in order to ensure that data can be exploited or in synchronisation with the customer application / system to execute specific actions during the printing process,
 - Check that data are well printed,
 - Manage and automatize errors in sync with the customer application / system,
 - Etc.
- **User authentication:** Optimize registration and identification process (ex by scanning MRZ band of an ID card to read user information and reuse them for printing process),
- **Areas detection:** Detect some specific areas on the card to print data.
- **Duplicata:** Duplicate a card by using the scanner functionality to print a duplicata in order to protect the original document.

Printer models supported with scanner option

- Primacy 2*
- Other printers upon request**

* Scanner option not compatible with smart card contact and contactless encoders and lamination module.

** Feasibility evaluation should be done before with the Specific Projects team.



TECHNICAL SPECIFICATIONS

CARD SIZE

- ISO7811 credit card size

SCANNING OPTIONS

- **Scanning side:** Duplex
- **Sensor:** Color CIS (Contact Image Sensor)
- **Scan width:** 54.2 mm
- **Resolution:** 300 / 600 dpi
- **Color:** Greyscale, Color
- **Image formats:** PNG, JPG, BMP
- **Processing speed:** 4 seconds

INTERFACE

- USB 2.0 High Speed (480Mbps)

ENVIRONMENT

- **Operating:** 0~32°C, 10~85%, Non condensing
- **Storage:** -7~49°C, 10~98%, RH, Non condensing

ENCODING OPTIONS COMPATIBILITY

- **Magnetic encoding:** Yes (MAG ISO 3-track, MAG JIS2).
- **Smartcard contact:** Not compatible with scanner option.
- **Contactless:** Not compatible with scanner option.

OTHER OPTIONS COMPATIBILITY

- **Lamination module:** Not compatible with scanner option.



Evolis - 14 avenue de la Fontaine - Z.I. Angers-Beaucouzé 49070 Beaucouzé - France
T +33 (0) 241 367 606 - F +33 (0) 241 367 612 - info@evolIS.com

www.evolIS.com